

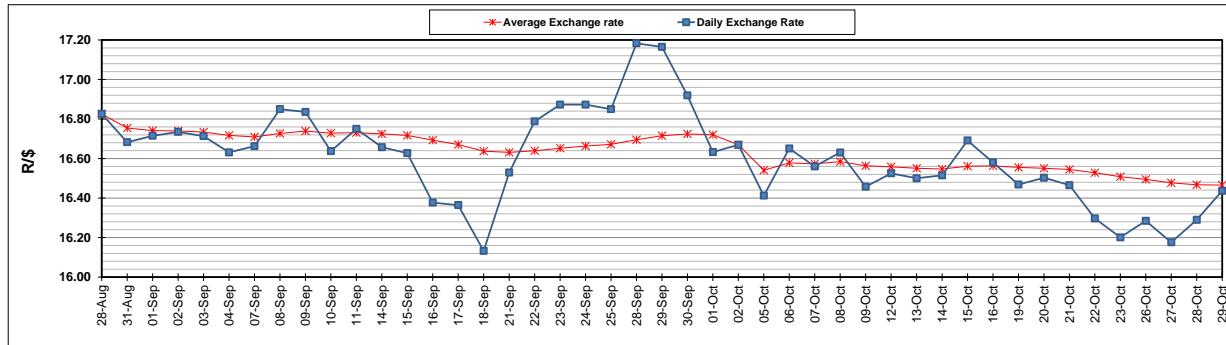
	PETROL 95 ULP	PETROL 93 ULP & LRP	DIESEL 0.05%	DIESEL 0.005%	ILL. PAR.
GAUTENG PUMP PRICE (SA c/l) AS FROM 07/10/2020	1,486.000	1,466.000	-	-	-
WHOLESALE PRICE (SA c/l) AS FROM 07/10/2020	-	-	1,237.560	1,238.960	640.828
SINGLE NATIONAL MAXIMUM RETAIL PRICE	-	-	-	-	798.000
BASIC FUEL PRICE - 29/10/2020 (SA c/l)	464.209	457.300	455.044	458.688	434.375
PRESS RELEASE CONTRIBUTION TO BFP 07/10/2020 - 29/10/2020 (SA c/l)	533.470	523.470	486.630	488.030	436.128
UNIT OVER/(UNDER) RECOVERY - 29/10/2020 (SA c/l)	69.261	66.170	31.586	29.342	1.753
AVERAGE BASIC FUEL PRICE 02/10/2020 - 29/10/2020	511.309	503.412	489.019	491.691	462.605
AVERAGE UNIT OVER/(UNDER) RECOVERY 02/10/2020 - 29/10/2020	26.961	23.508	11.111	10.289	(15.077)

ANALYSIS MOVEMENT OF AVERAGE OVER/(UNDER) RECOVERY

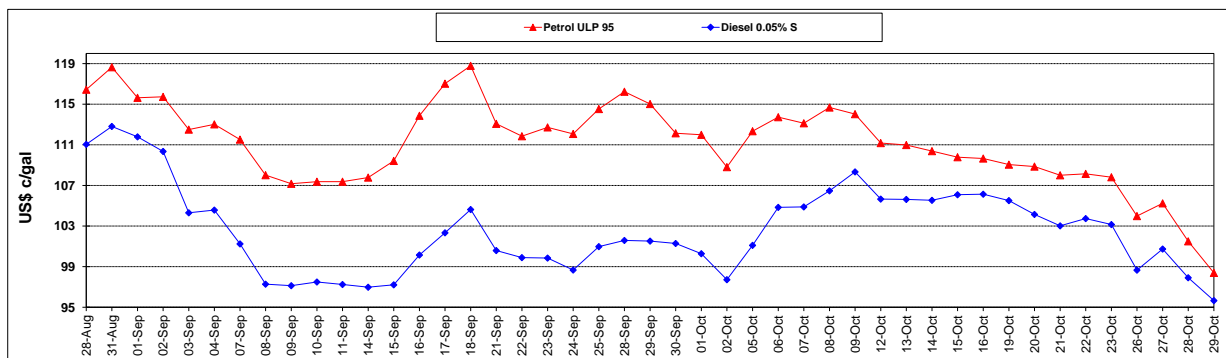
	PETROL 95	PETROL 93	DIESEL 0.05%	DIESEL 0.005%	ILL. PAR.
- MOVEMENT IN INTERNATIONAL PRODUCT PRICES	19.052	15.721	3.547	2.683	(22.233)
- MOVEMENT IN EXCHANGE RATE	7.909	7.787	7.564	7.606	7.156
AVERAGE UNIT OVER/(UNDER) RECOVERY 02/10/2020 - 29/10/2020	26.961	23.508	11.111	10.289	(15.077)

R/\$ EXCHANGE RATE - (R/\$16.4368 - 29/10/2020)

EXCHANGE RATE USED IN BASIC FUEL PRICE



INTERNATIONAL PRODUCT PRICES OF BASKET USED IN BASIC FUEL PRICE



BASIC FUEL PRICE IN SA CENTS PER LITRE

